

2010 Acquisitions

Musée
du Verre
de Conches

CONCHES



DU 16 OCTOBRE AU 27 NOVEMBRE 2010

LES
ACQUISITIONS
de l'année 2010



Glass museum - Conches - France
16th of October - 27th November 2010

2010 Acquisitions

In 2010, the Conches Glass Museum made a great number of acquisitions for its permanent collection.

The Amon Gallery generously donated a collection of blown glass art works by Claude Morin that he did in the 1970s to 1980s, thus completing the collection of decorative art dedicated to the revival of French blown glass of this period.

Our sculpture collection has also been enhanced with a second donation from the Amon Gallery which includes sculptures by Eva Fiserova, Lubomir Arzt, Joramir Rybak, Christian Klepsch, Peter Layton and Antoine Leperlier, all from the 1980s.

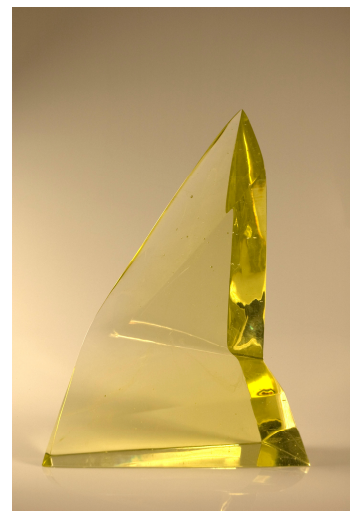
And last but not least, our stained glass window collection has been enriched by a representation of Saint Maurice that François Décorchemont did in 1965, a large number of sketches by Jacques Berland in the fifties as well as the magnificent stained glass window, "Shattered Gold," done by Henri Guerin in 2001.



Claude Morin,
Spirale, 1987



François Décorchemont,
Saint Maurice, 1965



Eva Fiserova,
Dominante, vers 1980

Claude Morin

Donations from the artist and the Amon Art Gallery

Claude Morin worked in his blown glass workshop in the little French town of Dieulefit in 1970. He began by making the usual containers such as bottles, jugs or vases with simple and harmonious shapes. But by 1975, his *bouteilles folles*, or “mad bottles” began to distance themselves from this utilitarian production. By stretching the bottle neck, the object would become a decorative, but unusable one. This direction picked up speed in 1979 when he stumbled upon the decorative potential of including metal leaves, glass slabs and wires in his works. He then began creating vases and glass objects with polychrome decors in the 1980s.

During this era, Jean-Pierre and Madeleine Maffre managed a specialized contemporary ceramic workshop in Bordeaux. Back in 1973, they became interested in the innovative work done by the glassmaker Claude Morin, who they regularly met in Glass Arts Exhibitions. In 1981, when they opened their new art gallery in Paris focusing on contemporary glass art, Claude Morin was one of the artists whose work had been chosen. This would continue until he quit his glass blowing activities in 1990.

Henceforth, donations from the artist as well as the Amon Art Gallery allow our museum to hold a large collection of Claude Morin’s career, magnificently completing the collection of decorative art objects dedicated to the revival of French blown glass in the 1970s and 1980s.



Claude Morin,
Vase, 1982



Claude Morin,
Flacon, 1985



Claude Morin,
Spirale, 1987

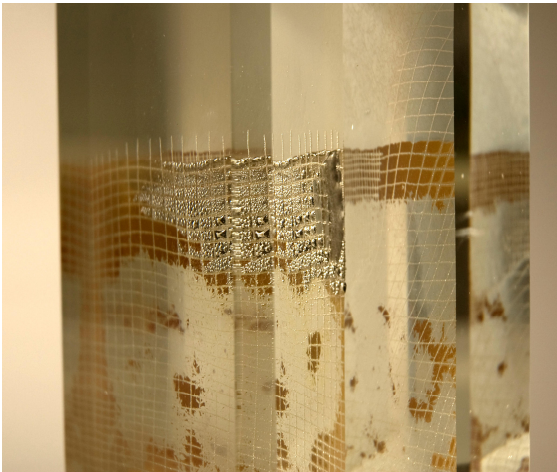
Glass sculptures

New donations from Amon Art Gallery

In the 1980s, the revival of French blown glass helped promote the development of a network of art galleries. Amongst these, the Amon Art Gallery was the first in Paris to specialize in showing only contemporary glass works of art. Presenting the works of many French glass artists (Morin, Monod, Novaro, Leperlier, Begou and Fievet), Jean-Pierre and Madeleine Maffre also focused on glass sculpture, exhibiting works of English, German, Czech, American and Japanese artists.

The English glass artist, Peter Layton, founder of the “London Glassblowing Workshop,” presented his works in gallery exhibitions in 1982 and 1986; in 1986 Eberhard Zell participated in an exhibition of German artists, who, like him, were specialized in the unusual technique of burner worked glass. The true talent of these Parisian gallery owners, before the fall of the Berlin Wall, was also to present the first exhibitions of Eastern European plastic artists in France, including laminated sized works by Jaromir Rybak in 1985, unusual glass blocks by Christian Klepsch in 1987, yellow crystal cast glass sculptures by Eva Fiserova in 1989 as well as optical glass sculptures by Lubomir Arzt in 1991.

Madeleine Maffre has donated works from the stock of her former gallery for many years now. These donations promote the current study of relations between an art gallery owner and artists in the favourable context of glass in the 1980s. With this new donation, the Conches Glass Museum has enriched its collections with sculptures dating back to this time.



Jaromir Rybak,
Sculpture, 1983



Christian Klepsch,
Sculpture, 1985



Eva Fiserova,
Dominante, 1989

Stained glass window

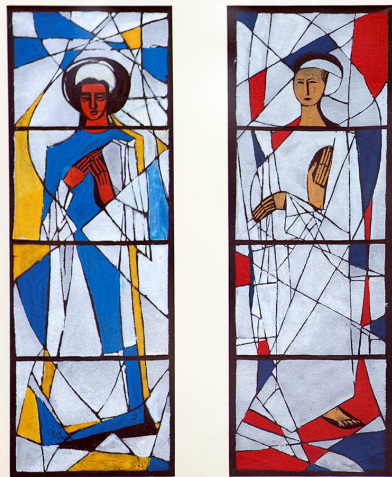
New acquisitions, new donations

Francois Decorchemont, (1880-1971) the master glassmaker, holds a special place in the Conches Glass Museum. Born in Conches, he set up his workshop to create decorative glass objects, before tackling the difficult art of stained glass windows in *pate de verre*, which can be admired in many different churches in Eure, but also in private homes. This was how the Saint Maurice stained glass window was commissioned in 1965 for Tricon-Dunois, a reserve general that Francois Decorchemont had met thirty years ago, when the Saint Odile church was being built in Paris.

With the expansion of its Francois Decorchemont stained glass window collection, the Conches Glass Museum has now become a benchmark to study and promote the works of the artist born in Conches. Currently however, the Conches Glass Museum has also begun to exhibit XXth century stained glass window works. Thus, a large collection of sketches by Jacques Berland (1910-1999) who worked alongside Francois Decorchemont in the 1950s was recently donated to the Museum by the painter's family. Moreover, the exhibition of Henri Guerin's glassmaker's workshop (1929-2009) presented this year in the Museum facilitated the acquisition of the magnificent stained glass window name "Shattered Gold", that the artist did in 2001. His family also donated a small sculpture by Henri Guerin entitled "Reed", and his grand-son, Mathieu Gasc who is currently taking over his grand-father's workshop, did the sized glass work entitled "Sunday Star" when he was in Conches.



François Décorchemont,
Saint Maurice, 1965

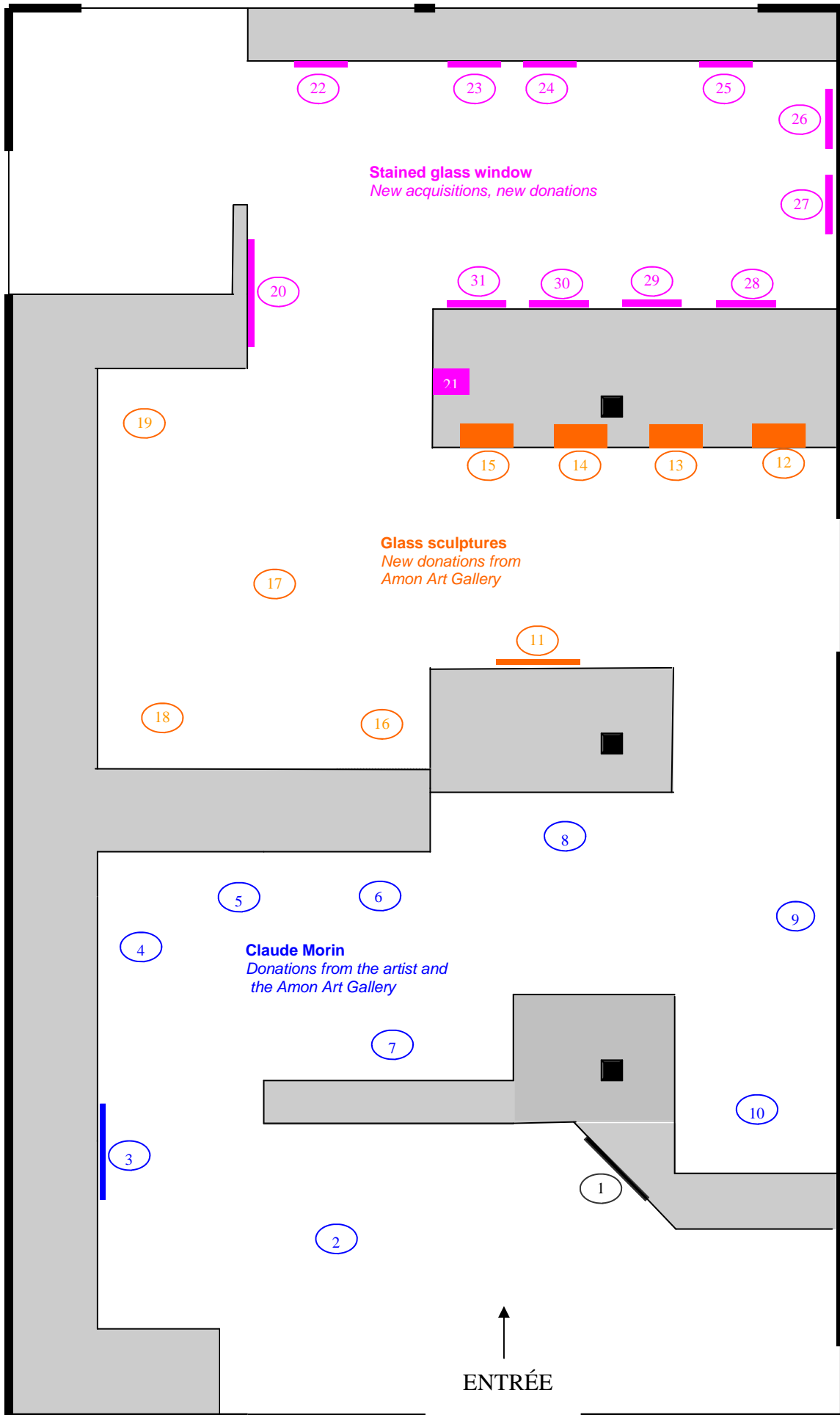


Jacques Berland,
Esquisses, années 1950



Henri Guérin,
Eclats d'or, 2001

PLAN MUSEOGRAPHIQUE



LISTE OF THE EXHIBITION GLASS ART OBJECT

1	Text : presentation of the exhibition	
2	Claude Morin : 7 bottles	1975
3	Text: Claude Morin, donations from the artist and the Amon Art Gallery	
4	Claude Morin : bottle	1979
5	Claude Morin : 5 bottle, vase, vessel	1981-1982
6	Claude Morin : 3 vase and flake	1982-1983
7	Claude Morin : 6 vases	1984-1985
8	Claude Morin : 2 flake	1985
9	Claude Morin : 2 blown sculpture	1986-1987
10	Claude Morin : 1 casting sculpture	1995
11	Text: Glass sculpture, new donations from Amon Art Gallery	
12	Eberhard Zell: box lampworking	1986
13	Peter Layton: object 1	1986
14	Peter Layton: object 2	1986
15	Antoine Leperlier: object	1984
16	Christian Klepsch: sculpture	1985
17	Eva Fiserova: sculpture "dominate"	1989
18	Jaromir Rybak: sculpture	1983
19	Lubomir Arzt: sculpture	1990
20	Text: Stained glass window, new acquisitions, new donations	
21	Henri Guérin; "Rameau"	2005
22	François Décorchemont: "Saint-Maurice"	1965
23	Henri Guérin: "Shattered gold"	2001
24	Mathieu Gasc : "Sunday star"	2010
25	Jacques Berland: Sketche	About 1950
26	Jacques Berland: Sketche	About 1950
27	Jacques Berland: Sketche	About 1950
28	Jacques Berland: Sketche	About 1950
29	Jacques Berland: Sketche	About 1950
30	Jacques Berland: Sketche	About 1950
30	Jacques Berland: Sketche	About 1950

INFORMATIONS AND CONTACT

Exhibition from the 16th of October to the 27th of November 2010

Opening the Saturday 16th of October at 11h AM

Glass museum

Route de Sainte-Marguerite
27190 CONCHES
FRANCE
tél : (00 33) 2 32 30 90 41
fax : (00 33) 2 32 30 03 62
Mail : musees@conchesenouche.com
www.conches-en-ouche.fr
www.musees-haute-normandie.fr

Contact press

Eric Louet, director
Tél. : (00 33) 2 32 30 95 70, mail : musees@conchesenouche.com

Accès

By car : From Paris, 100km, A13, puis RN 13 en dir. d'Evreux, puis D830 en dir. de Conches.
From Rouen, 50 km, A13, puis RN 154 en dir. d'Evreux, puis D830 en dir. de Conches.
By train :From Paris, gare Saint-Lazare, 55 min